

Optronics Cabinets Platinum Cabinet Accessories

OPTRONICS
CABINETS



Specification

Material: SPCC Cold rolled steel 1.2mm
Surface Finish: Degreasing, phosphate dip, powder coated.
Parameter: 220v AC
Colour: RAL9004 - Black

| 1U FAN UNIT | | |
|---------------------------------------|------|----------|
| Description | Size | Part No. |
| Unit with 2 Fans German Style - Black | 1U | FAN01 |
| Unit with 4 Fans German Style - Black | 1U | FAN02 |
| Unit with 2 Fans UK Style - Black | 1U | FAN03 |
| Unit with 4 Fans UK Style - Black | 1U | FAN04 |



Specification

Material: SPCC Cold rolled steel/14"2-long section slide. 1.5mm.
Surface Finish: Degreasing, phosphate dip, powder coated.
Colour: RAL9004 - Black

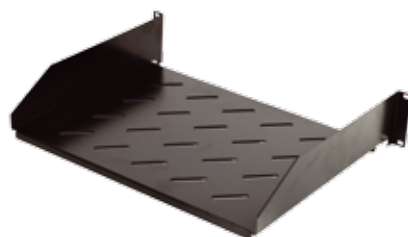
| LOCKABLE SLIDING DRAW | | |
|-------------------------------|------|----------|
| Description | Size | Part No. |
| 2U High Lockable Sliding Draw | 2U | DRAW01 |



Specification

Material: Cold rolled steel 1.5mm
Surface Finish: Degreasing, phosphate dip, powder coated.
Colour: RAL9004 - Black
Depth: 266mm
Load Rate: 15kg

| CANTILEVER SHELF - 1U | |
|-----------------------|----------|
| Description | Part No. |
| 1U Cantilever Shelf | SHELF14 |



Specification

Material: Cold rolled steel 1.5mm
Surface Finish: Degreasing, phosphate dip, powder coated.
Colour: RAL9004 - Black
Depth: 350mm
Load Rate: 15kg

| CANTILEVER SHELF - 2U | |
|-----------------------|----------|
| Description | Part No. |
| 2U Cantilever Shelf | SHELF13 |

Optronic Cabinets Platinum Cabinet Accessories



Specification

Material: SPCC Cold rolled steel 1.2mm.

Surface Finish: Degreasing, phosphate dip, powder coated.

Parameter: Flexing length: 210mm
Load capacity: 20KG.

Colour: RAL9004 - Black

Depth: 600: 350mm
800: 550mm
1000: 710mm

SLIDING SHELF

| Description | Cabinet Size | Part No. |
|---------------|--------------|----------|
| Sliding Shelf | 600 Deep | SHELF17 |
| Sliding Shelf | 800 Deep | SHELF11 |
| Sliding Shelf | 1000 Deep | SHELF12 |



Specification

Material: SPCC Cold rolled steel 1.2mm

Surface Finish: Degreasing, phosphate dip, powder coated.

Parameter: Loading capacity: 60KG

Colour: RAL9004 - Black

Depth: 600: 350mm
800: 550mm
1000: 710mm

FIXED SHELF

| Description | Cabinet Size | Part No. |
|-------------|--------------|----------|
| Fixed Shelf | 600 Deep | SHELF01 |
| Fixed Shelf | 800 Deep | SHELF02 |
| Fixed Shelf | 1000 Deep | SHELF03 |



Specification

Material: SPCC Cold rolled steel 1.2mm

Surface Finish: Degreasing, phosphate dip, powder coated.

Parameter: Loading capacity: 100KG

Colour: RAL9004 - Black

Depth: 600: 350mm
800: 550mm
1000: 710mm

HEAVY DUTY FIXED SHELF

| Description | Cabinet Size | Part No. |
|------------------------|--------------|----------|
| Heavy Duty Fixed Shelf | 600 Deep | SHELF04 |
| Heavy Duty Fixed Shelf | 800 Deep | SHELF05 |
| Heavy Duty Fixed Shelf | 1000 Deep | SHELF06 |



Specification

Material: SPCC Cold rolled steel 1.2mm.

Surface Finish: Degreasing, phosphate dip, powder coated.

Parameter: Load capacity: 100KG.

Colour: RAL9004 - Black

Depth: 600: 350mm
800: 550mm
1000: 710mm

HEAVY DUTY FIXED SHELF & MOUNTING EARS

| Description | Cabinet Size | Part No. |
|---|--------------|----------|
| Heavy Duty Fixed Shelf With Mounting Ears | 600 Deep | SHELF07 |
| Heavy Duty Fixed Shelf With Mounting Ears | 800 Deep | SHELF08 |
| Heavy Duty Fixed Shelf With Mounting Ears | 1000 Deep | SHELF09 |

Optronic Cabinets Platinum Cabinet Accessories



Specification

Material: SPCC Cold rolled steel.

Surface Finish: Degreasing, phosphate dip, power coated.

Colour: RAL9004 - Black

Dimensions:

| | |
|--------------------|-------------------------|
| 600 X 600 Plinth: | H: 100 W: 600 D: 600mm |
| 600 X 800 Plinth: | H: 100 W: 600 D: 600mm |
| 600 X 1000 Plinth: | H: 100 W: 600 D: 1000mm |
| 800 X 600 Plinth: | H: 100 W: 800 D: 600mm |
| 800 X 800 Plinth: | H: 100 W: 800 D: 800mm |
| 800 X 1000 Plinth: | H: 100 W: 800 D: 1000mm |

| PLINTH | | |
|-------------------|--------------|----------|
| Description | Cabinet Size | Part No. |
| 600 X 600 Plinth | 600 X 600 | PLINTH01 |
| 600 X 800 Plinth | 600 X 800 | PLINTH02 |
| 600 X 1000 Plinth | 600 X 1000 | PLINTH03 |
| 800 X 600 Plinth | 800 X 600 | PLINTH04 |
| 800 X 800 Plinth | 800 X 800 | PLINTH05 |
| 800 X 1000 Plinth | 800 X 1000 | PLINTH06 |



Specification

Material: SPCC Cold rolled steel.

Surface Finish: Degreasing, phosphate dip, power coated.

Colour: RAL9004 - Black.

| BLANKING PLATES | | |
|-----------------|------|----------|
| Description | Size | Part No. |
| Blanking Plate | 1U | 1UBLANK |
| Blanking Plate | 2U | 2UBLANK |
| Blanking Plate | 3U | 3UBLANK |



Specification

Material: Cold Rolled Steel 1.2mm

Surface Finish: Degreasing, phosphate dip, powder coated.

Colour: RAL9004 - Black

| RECESSED CABLE MANAGEMENT BAR | | |
|-------------------------------|------|----------------|
| Description | Size | Part No. |
| Cable Management | 1U | 1UCABLEBAR |
| Recessed Cable Management | 1U | 1UCABLEBAR/REC |
| Cable Management | 2U | 2UCABLEBAR |



Specification

Material: Cold Rolled Steel 1.2mm

Surface Finish: Degreasing, phosphate dip, powder coated.

Colour: RAL9004 - Black

| BRUSH STRIP | | |
|-------------|------|----------|
| Description | Size | Part No. |
| Brush Strip | 1U | 1UBRUSH |

Optronic Cabinets Platinum Cabinet Accessories



Specification

Material: SPCC Cold rolled steel 1.5mm.
Surface Finish: Degreasing, phosphate dip, powder coated.
Colour: RAL9004 - Black

| CHASSIS SUPPORTS (L-RAIL) | | |
|---------------------------|--------------|----------|
| Description | Cabinet Size | Part No. |
| 600mm LRAIL | 600 Deep | LRAIL01 |
| 800mm LRAIL | 800 Deep | LRAIL02 |
| 1000mm LRAIL | 1000 Deep | LRAIL03 |



Specification

Surface Finish: Zinc plated
Note - When calculating total load, the weight of the cabinet should be deducted.

| CASTORS | | |
|----------------------------------|-------|----------|
| Description | Load | Part No. |
| 2" Heavy Duty Castor for Cabinet | 240kg | HDCASTOR |



Specification

Material: Steel
Surface Finish: Degreasing, phosphate dip, powder coated.
Colour: Black

Note - Adjustable feet come as standard on all floor standing cabinets.

| ADJUSTABLE FEET | |
|------------------------------|----------|
| Description | Part No. |
| Feet for Stabilizing Cabinet | FEET |



Specification

Material: Steel

| BAYING KIT | |
|---|----------|
| Description | Part No. |
| Baying Kit for Connecting Cabinets Together | BAYKIT |